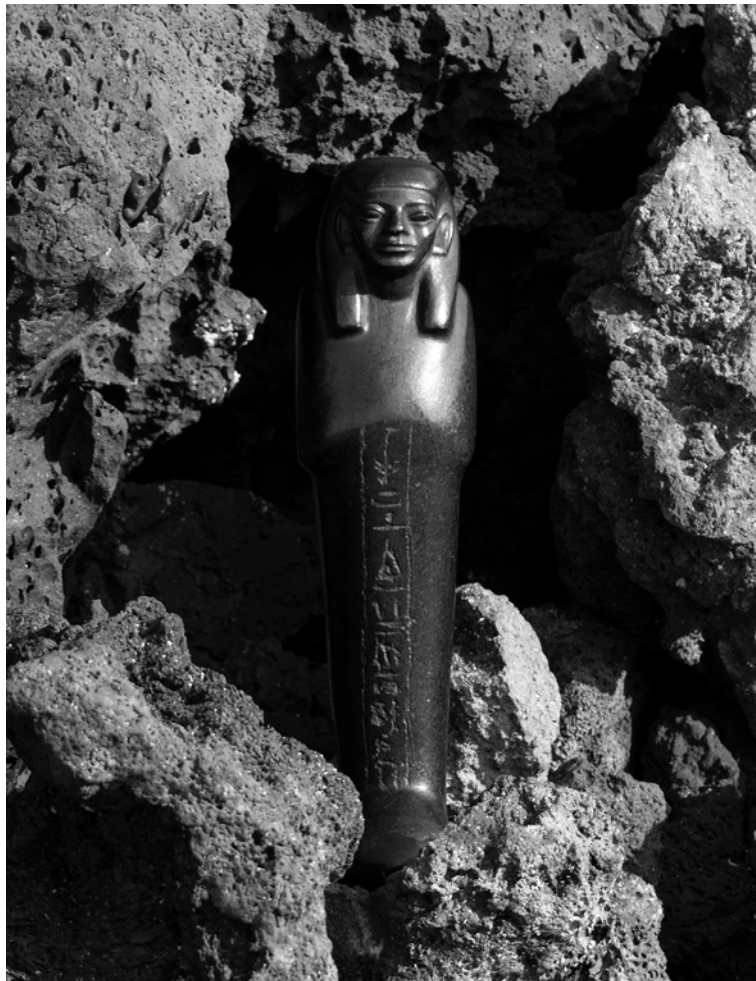


# MAGMA

Egyptian, Greek and Roman sculptures



Galerie Chenel













# MAGMA

17 October - 26 November

MMXXIII



Lanzarote, The Canary Islands





## MAGMA

A vibrant exhibition, with two approaches.

First, geologically, through sculptures we collected made from basalt, granite and andesite rocks, dating from Egypt's predynastic period to the Graeco Roman period. It is fabulous to think that these magmatic materials made their way to us from the very depths of the Earth. Following a volcanic explosion, bright red lava cools and solidifies, becoming brown or crystalline, and turns to rock. Well before our time, mesmerised by the riches under their feet, humans extracted blocks to give shape to their desires. Known for their strength and toughness, these rocks were magnificently carved and are now enigmatic treasures.

Secondly, for our exhibition, we also wanted to transport you to Pompeii to dream of Mount Vesuvius. The eruption of that destructive and fascinating volcano occurred in AD 79, burying Pompeii under a blanket of ash. History still attests to the beauty and refinement of those sites, which reveal a Pompeiian taste that has spanned centuries, still inspiring us today.

Alongside our works, pictures of the fiery landscapes of Lanzarote, with its black, brown and reddish volcanic soils, provide a contrast between wild nature and rocks wrought by human hands.













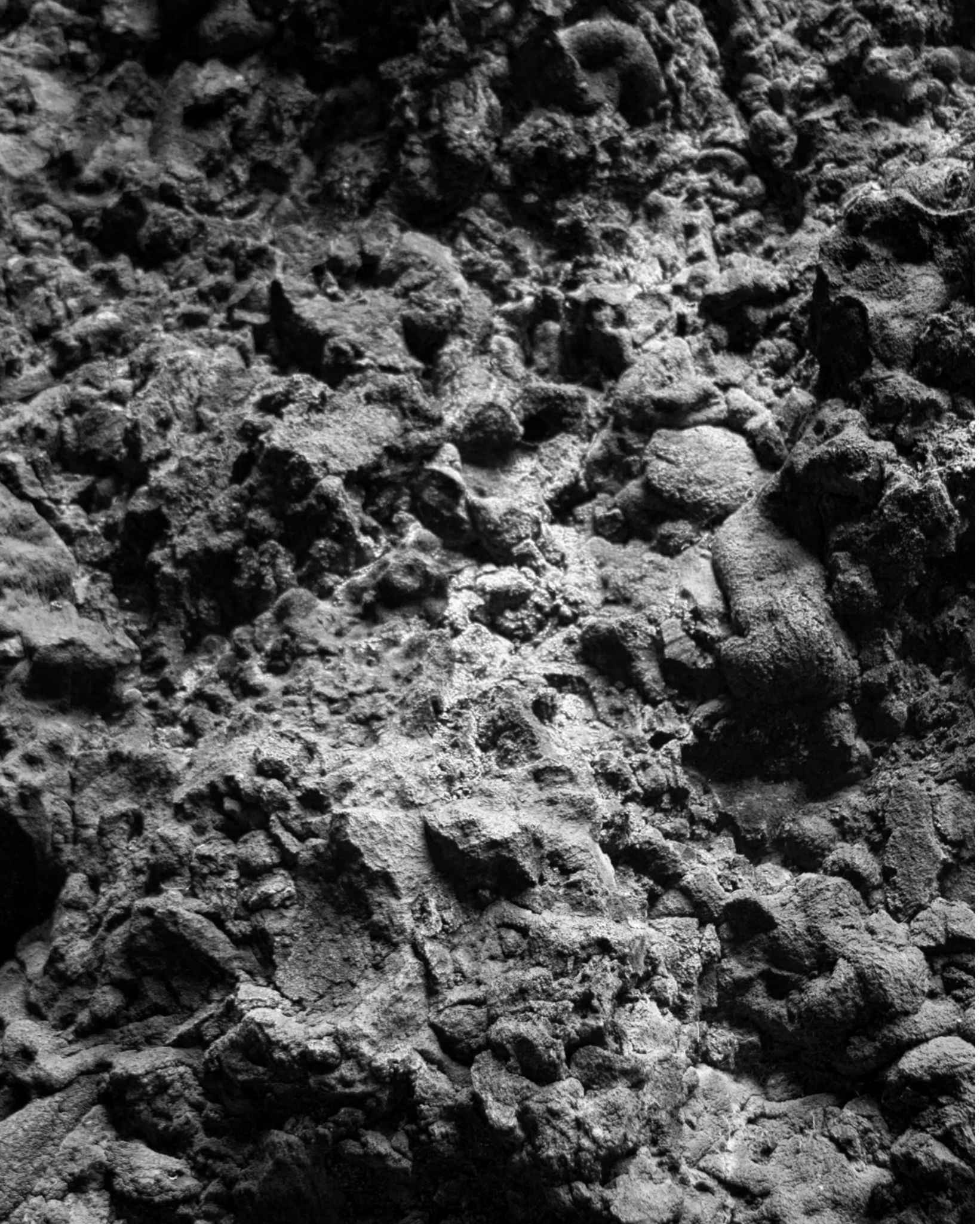
























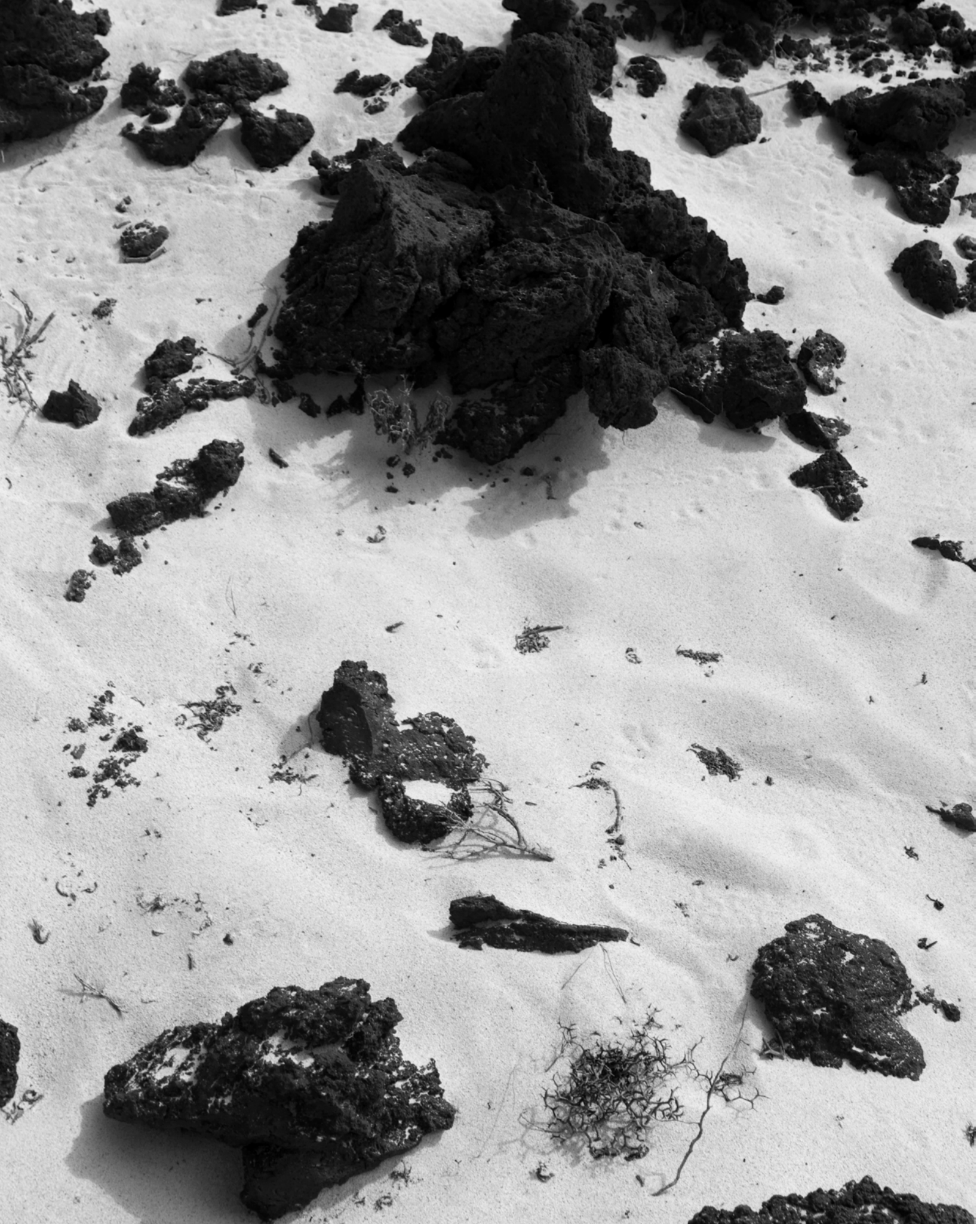






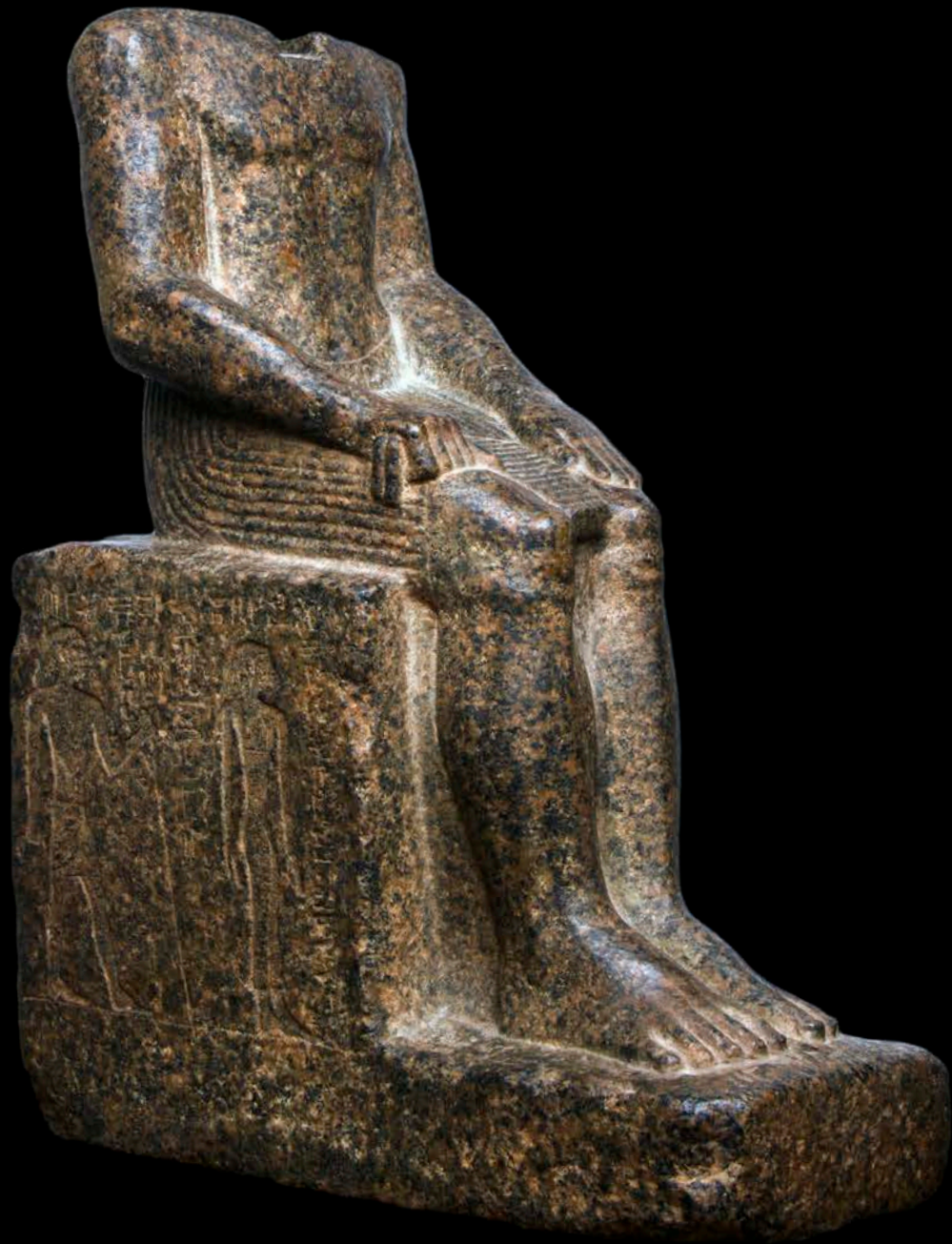




























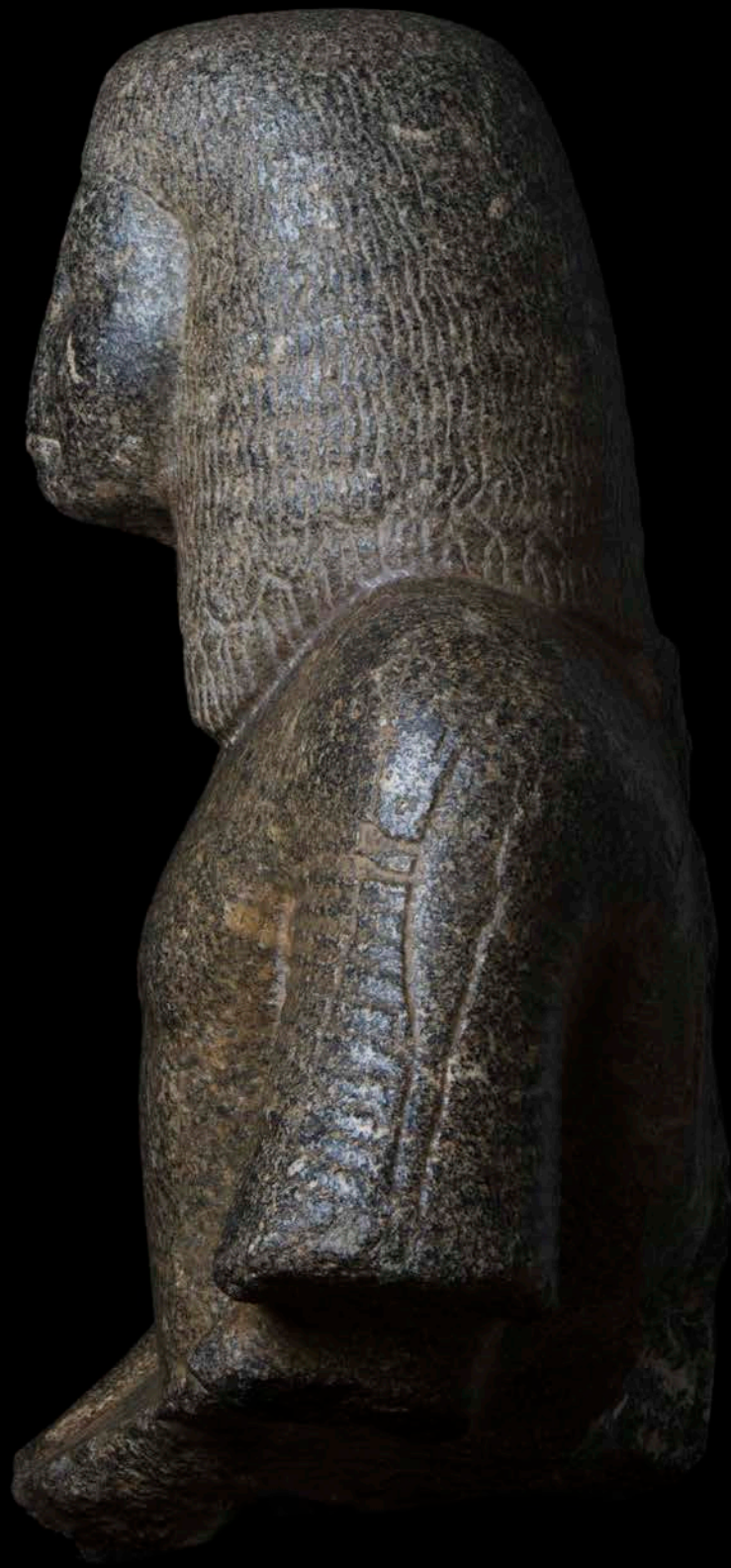












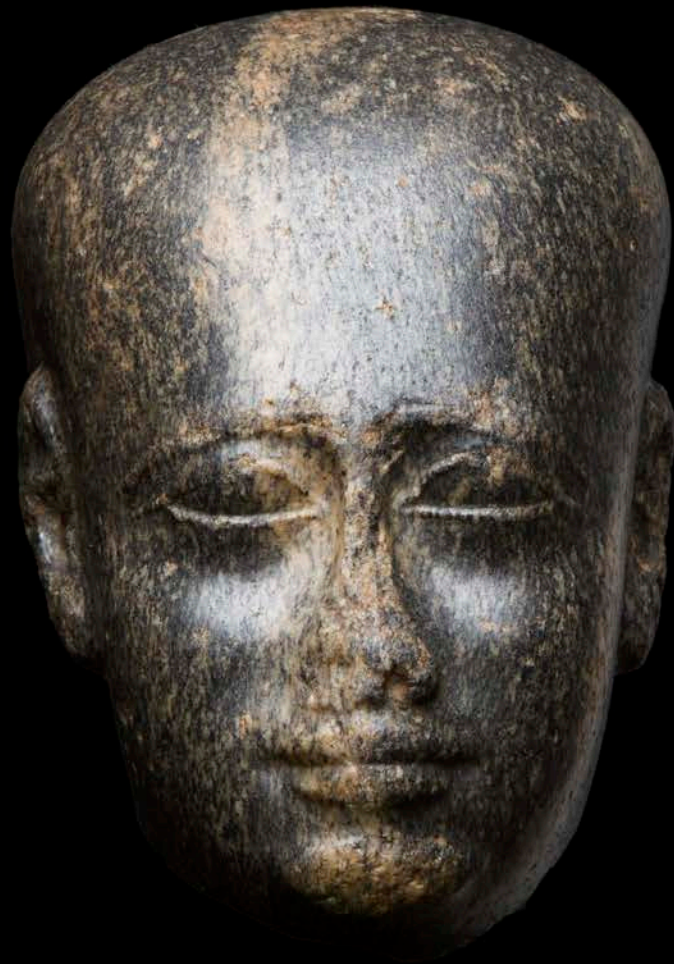










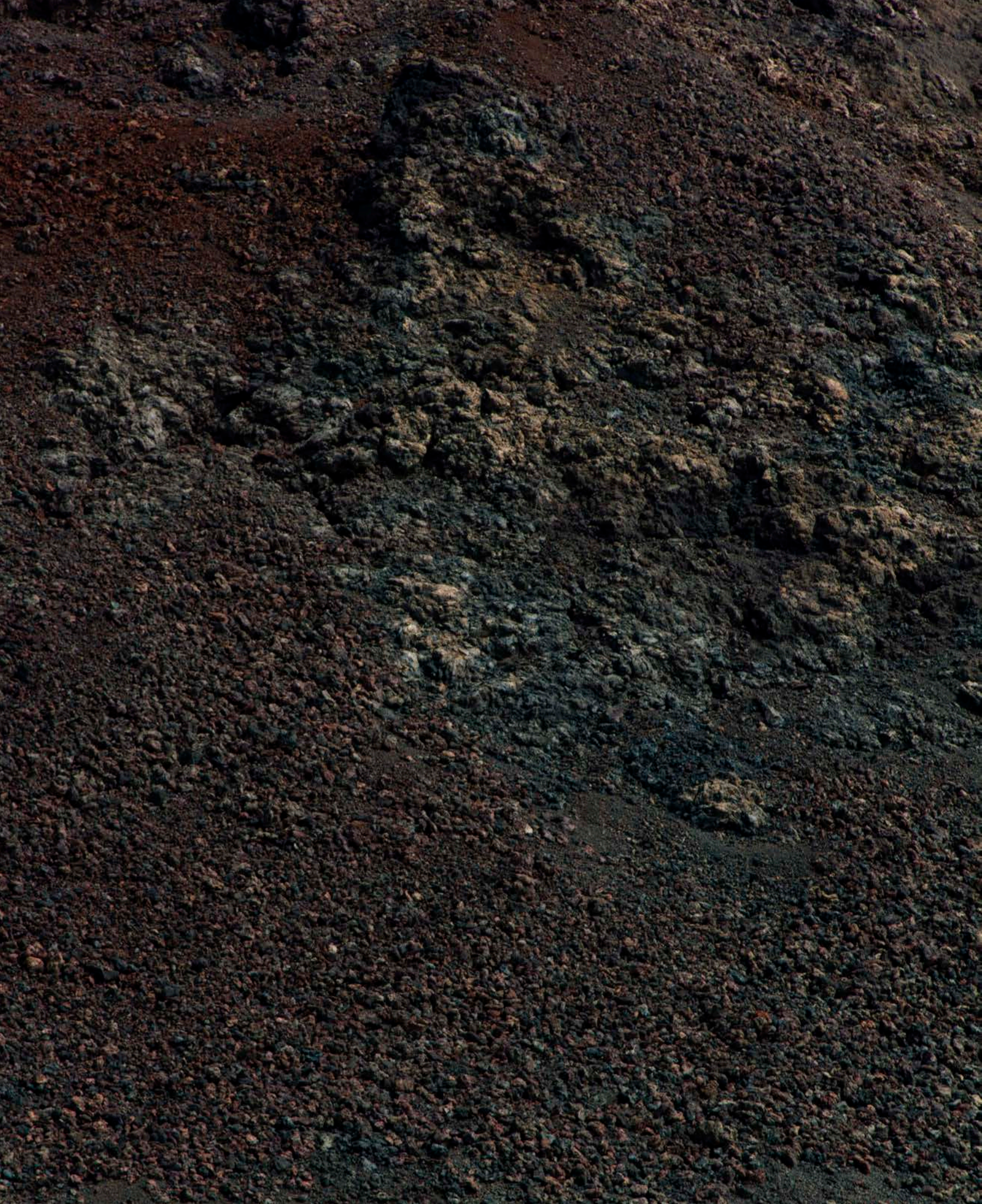






















































































































## INDEX



### TORSO OF ISIS

Egyptian, Ptolemaic period, 332-32 BC

Basalt

H.: 15 cm. - W.: 9 cm. - D.: 6 cm.

*Provenance:*

*Former Parisian private collection since the 1940s.*

*Thence by descent.*



### HORUS FALCON

Egyptian, Ptolemaic period, circa 305-30 BC

Red granite

H.: 50 cm. - W.: 19,5 cm. - D.: 40 cm.

*Provenance:*

*On the French art market.*

*Sold by Bonhams London, "Fine Antiquities", 4 July 1995, lot 43.*

*Then in the collection of Gottfried and Helga Hertel, Cologne, acquired at the above sale.*



### SPHEROIDAL VASE

Egyptian, Predynastic period, Naqada III, circa 3200-3000 BC

Diorite

H.: 13 cm. - D.: 21 cm.

*Provenance:*

*Former Belgian private collection of Mr. M. C., acquired in the 1980s.*





### BLOCK STATUE INSCRIBED

Egyptian, New Kingdom, Dynasty XVIII, circa 1550-1292 BC

Basalt

H.: 20,5 cm. - W.: 17 cm. - D.: 20 cm.

*Provenance:*

*Former European collection since at least the 1940s-1950s based on the mounting.*

*Then in the private collection of Gaston Swaton (1877-1956), France.*

*By descent to his grand-daughter.*



### KNEELING MAN INSCRIBED IN THE NAME OF HOR

Egyptian, 3<sup>rd</sup> Intermediate period, Dynasty XXV, 8<sup>th</sup> - 7<sup>th</sup> century BC

Basalt

H.: 18 cm - W.: 11 cm. - D.: 19 cm.

*Provenance:*

*Former Parisian private collection, acquired from the art dealer Hassani Abd-el-Galeel, Luxor, on 27 December 1973.*

*Thence by descent.*



### STELEPHORUS STATUE

Egyptian, New Kingdom, Dynasty XVIII, circa 1400-1292 BC

Granite

H.: 21,5 cm. - W.: 18 cm. - D.: 16 cm.

*Provenance:*

*In the Galerie des Saints Pères, 6<sup>th</sup> arrondissement, Paris, on November 1982.*

*Then acquired by Norma-Jean and Bernard V. Bothmer (1912-1993), on 8 September 1984.*



### SHABTI IN THE NAME OF NEDJEM-IB

Egyptian, Middle Kingdom, late Dynasty XII - early Dynasty XIII, circa 1800-1640 BC

Brown serpentine

H.: 28 cm. - W.: 7 cm. - D.: 7 cm.

*Provenance:*

*Formerly in the collection of Raphaël Stora (1886-1963), New York.*

*Then with James E. Le Père, 3 East Third Street, New York.*

*Sold to Norbert Choucroun (1925-1996), Houston, on 13 September 1985.*

*Then in the collection of Will McLendon, Houston.*



### SEATED STATUE OF INEFER

Egyptian, Late Period, Dynasty XXV or Dynasty XXVI

Aswan granite

H.: 32 cm. - W.: 25,5 cm. - D.: 11 cm.

*Provenance:*

*Sold in a public Antique sale in 1950-1960, lot 41, according to an extract of the catalogue.*

*Acquired by Marguerite Bordet (1909-2014), visual artist.*

*Then in a Parisian private collection from 1999.*



### BUST OF A DIGNITARY

Egyptian, New Kingdom, Ramesside period, Dynasty XIX, 14<sup>th</sup> - 12<sup>th</sup> century BC

Reemployed during the 3<sup>rd</sup> Intermediate period, Dynasty XXII, 10<sup>th</sup> - 8<sup>th</sup> century BC

Grey granite

H.: 56 cm. - W.: 52 cm. - D.: 24 cm.

*Provenance:*

*Former collection of Valère Mabile (1840-1909), acquired circa 1880-1900.*

*By descent to his grandson Henri Borel de Bitche (1892-1953), Château de Ramezée, Belgium.*

*On loan at the Musée de Mariemont from 1944 until the late 1960s.*

*Then in a private Belgian collection.*





### HEAD OF A MAN SO-CALLED "EGGHEAD"

Egyptian, Late Period - early Ptolemaic period, 4<sup>th</sup> century BC

Granodiorite

H.: 16,5 cm. - W.: 11 cm. - D.: 13 cm.

*Provenance:*

*Former private collection of Baron Alain de Rothschild (1910-1982), probably acquired in the 1950s. Thence by descent.*



### NESKHONSOU IPOUY AND HIS WIFE TAKHARYT

Egyptian, 2<sup>nd</sup> Intermediate period, Dynasty XVII, 17<sup>th</sup> - 16<sup>th</sup> century BC

Granodiorite

H.: 33 cm. - W.: 23 cm. - D.: 14 cm.

*Provenance:*

*Former British collection of Lady V. S. Meux (1852-1910), Theobald's Park, Hertfordshire. Sold with her collection in 1911.*

*On view at the Galerie Yvonne Moreau-Gobard in 1977.*

*The former French private collection of Mr. Guy Delbès (1928-2019) since the 1980s.*

*Publications:*

*- E. A. Wallis Budge, Egyptian Antiquities in the possession of Lady Meux [...], London, 1896, p. 150.*

*- S. Connor, Être et paraître : Statues Royales et privées [...], London, Golden House Publications (Middle Kingdom Studies, 10), 2020, p. 295.*



### HEAD OF AN OFFICIAL

Egyptian, New Kingdom, early to mid Dynasty XVIII, circa 1550-1390 BC

Black granite

H.: 13 cm. - W.: 16 cm. - D.: 12 cm.

*Provenance:*

*Former English private collection since the late 19<sup>th</sup> - early 20<sup>th</sup> century based on the custom-made and inscribed alabaster base.*

*Dina (1928-2021) and Raphael (1924-1999) Recanati, New York, acquired circa 1974; thence by bequest until present day.*



### **KNEELING MAN**

Egyptian, 3<sup>rd</sup> Intermediate period, Dynasty XXV, circa 670-660 BC

Red granite

H.: 22 cm. – W.: 13 cm. – D.: 16 cm.

*Provenance:*

*Former French private collection, Rouen, acquired before 1960.*



### **FEMALE PORTRAIT HEAD**

Egyptian, Ptolemaic period, 2<sup>nd</sup> - 1<sup>st</sup> century BC

Basalt

H.: 23 cm. – W.: 17 cm. – D.: 16 cm.

*Provenance:*

*Former collection of Sir Jacob Epstein (1880-1959), pioneer of modern sculpture, New York and London.*

*Then in the collection of Bruce McAlpine, London.*

*Then former collection of James and Marilyn Alsdorf, acquired from the above in 1974.*



### **SPHEROIDAL VASE**

Egyptian, Predynastic period, Naqada III, circa 3200-3000 BC

Diorite

H.: 18 cm. – D.: 28 cm.

*Provenance:*

*Former Belgian private collection of Mr. M. C., acquired in the 1980s.*





## NAOPHOROUS

Egyptian, Late period, Dynasty XXVI, 7<sup>th</sup>-6<sup>th</sup> century BC

Granite

H.: 21 cm. - W.: 8,5 cm. - D.: 16 cm.

*Provenance:*

*Former collection of Louis-Benjamin Fleuriat de Bellevue (1761-1852), La Rochelle.*

*By descent in the same family.*

*Sold at Beaussant Lefèvre, "Archéologie, Art d'Orient, Art d'Asie", Drouot Paris, 15 November 2013, lot 19.*

*Then in a Parisian private collection.*



## HAND HOLDING A DUCK

Egyptian, New Kingdom, Dynasty XXVIII, circa 1570-1350 BC

Basalt

H.: 20 cm. - W.: 15 cm. - D.: 8 cm.

*Provenance:*

*Former Swiss private collection, acquired on the Parisian art market in the 1980s.*



## FEMININE DRAPERY

Roman, 2<sup>nd</sup> century AD

Marble

H.: 185 cm. - W.: 58 cm. - D.: 47 cm.

*Provenance:*

*Former American private collection of a Lady, probably acquired between 1970s and 1990s.*

*Sold by her at Sotheby's New York, "Antiquities", 14 June 2000, lot 89.*

*Then in a French private collection, Villa Chantarella, Cap d'Antibes.*



### **LABRUM**

Roman, 1<sup>st</sup> century AD

Marble

H.: 85 cm. - W.: 61 cm. - D.: 60,5 cm.

Restorations from the 18<sup>th</sup> century.

*Provenance:*

*Former European collection since the late 18<sup>th</sup> - early 19<sup>th</sup> century based on the restoration techniques.*

*Former Parisian private collection since 1970s - 1980s.*

*Thence by descent.*



### **FRIEZE WITH A THEATRE MASK OF BACCHUS**

Roman, first half of the 1<sup>st</sup> century AD

Terracotta

H.: 41 cm. - W.: 48 cm. - D.: 13 cm.

*Provenance:*

*Former Belgian private collection of Jacques Shotte (1928-2007), acquired circa 1962, probably from Münzen und Medaillen, Basel.*



### **HERM OF A SATYR**

Roman, 1<sup>st</sup> century BC - 1<sup>st</sup> century AD

Basanite

H.: 60 cm. - W.: 18,5 cm. - D.: 17 cm.

*Provenance:*

*Former European collection since the 1950s based on the restoration techniques and mounting.*

*Then former British collection acquired at Newark Antiques Fair in 2019.*





## THEATRICAL MASK

Hellenistic, circa 3<sup>rd</sup> - 2<sup>nd</sup> century BC

Marble

H.: 23 cm. - W. : 20 cm. - D. : 9 cm.

*Provenance:*

*Former collection of Theodoros A. Zoumboulakis, Athens.*

*Acquired by Patrick A. Doheny (1923-2014), Beverly Hills, in 1961.*

*Thence by descent.*











Words by  
Antoinette Schneider - Rose-Aimée Tixier  
Gladys & Ollivier Chenel

Photography by  
Adrien Chenel

Printed by  
Burlet Graphics

With the participation of  
Vincent Martagex and Théophile Chenel.

No part of this publication may be transmitted in any form or by any means,  
electronic or mechanical, including photocopy, recording or any storage  
or retrieval system, without prior permission from the copyright holders and publishers.

Published in September 2023  
In an edition of 600.





3 Quai Voltaire, 75007 Paris  
Tel. +33 1 42 97 44 09



[www.galeriechenel.com](http://www.galeriechenel.com) / [contact@galeriechenel.com](mailto:contact@galeriechenel.com)

