

# HEAD OF ATHENA

GREEK, HELLENISTIC PERIOD, 1<sup>ST</sup> CENTURY BC - 1<sup>ST</sup> CENTURY AD  
MARBLE WITH A BROWN PATINA

---

HEIGHT: 21 CM.

WIDTH: 13 CM.

DEPTH: 23,5 CM.

---

*PROVENANCE:*

*FORMER COLLECTION OF  
JEAN P. LAMBROS, ATHENS.  
SOLD BY F. LAIR-DUBREUIL, PARIS,  
DROUOT, ON 17-18-19 JUNE 1912,  
LOT N°266.  
FORMER COLLECTION F.,  
A FRENCH BANKER FAMILY.  
IN THE SAME FAMILY UNTIL NOW.*



This sculpture depicts the goddess Athena wearing a Corinthian type helmet. The wavy hair is centrally parted and gathered at the

back. The features of her oval face are gentle and exquisitely sculpted, making our head very precious. The carved eyes are almond-shaped, framed by fine eyelids and surmounted by delicately carved brow lines. Her straight, narrow nose is set above a small mouth with thin lips.

Our head is also precious due to its patina, which still lingers on the marble. Delicately colouring the stone, it gives our sculpture a particular aura, a testament to the passing of time.

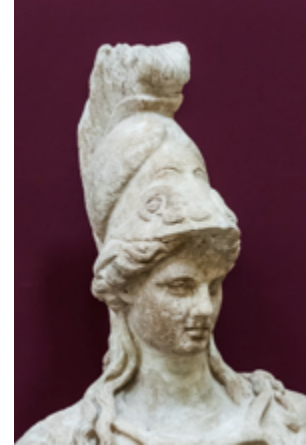




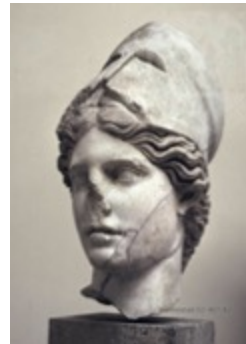
The head, dated from the late Hellenistic period is probably a copy of an original created during the 5<sup>th</sup> or 4<sup>th</sup> century BC. It very likely belongs to the Tittoni type Athena, whose more complete known example is exhibited in Avignon (ill. 1) This same iconography can also be found in Roman copies exhibited in Ostia, in Tivoli or in Sperlonga (ill. 2 - 4).

The head was in the collection of Jean P. Lambros (1843-1909), an important art dealer in Athens who worked with international museums such as the British museum in London. Three years after his death, a part of his collection including our head was sold by F. Lair-Dubreuil at Drouot Paris in 1912 (ill. 4). Our Athena was acquired by an important French banker family and stayed with them until nowadays.

#### Comparatives:

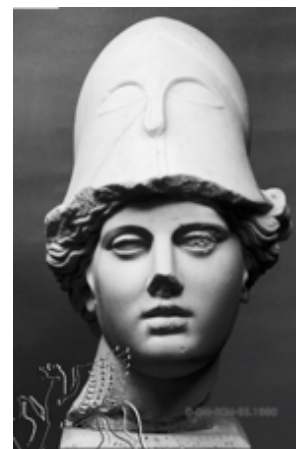


Ill. 1. Athena sculpture from the Tittoni type, Avignon, musée lapidaire.



Ill. 2. Head of Athena, Roman, 2<sup>nd</sup> century AD after a Greek original dated from the 5<sup>th</sup> century BC, marble, H.: 45 cm. Museo Ostiense, Ostia Antica, Sala III, inv. No. 1.

Ill. 3. Statue of Athena (detail), Roman, marble, H.: 172 cm. Villa Hadriana, Tivoli, inv. No. 2227.



Ill. 4. Head of Athena, Roman after a Greek original, marble. Museo Archeologico Nazionale, Sperlonga.



## Publication:

- F. Lair-Dubreuil, Paris, Drouot, on 17-18-19 June 1912, lot n°266.



266 Tête casquée d'Athénée. Elle est coiffée d'un casque corinthien orné, sur côtés, de têtes de bélier, et, sur le cimier, d'un sphinx (brisé).  
D'un modelé très délicat, elle offre toutes les caractéristiques d'un original de la fin du Ve siècle av. J.-C. Marbre de Paros trouvé en Sicile. H. 23  
(Voir planche XX.)

